

DIFFUSION-SCREEN



CHARACTERISTICS

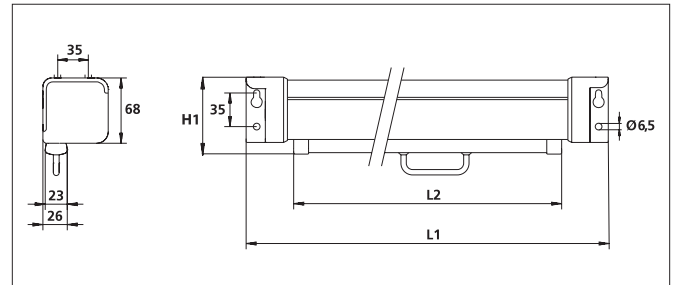
- White painted galvanised steel casing (RAL 9016).
- Pull-down fabric with handle at the bottom of the screen.
- Fixed spacing between the mounting brackets.
- Available with Matte White P or Datalux S fabrics.
- Screen supplied with a dual wall / ceiling mounting system.
- 4:3 and 16:9 formats with 2.5 cm all-round black border to enhance the colour contrast.
- 1:1 format without borders.

Wall and ceiling mounting LOW COST

This is the low cost version of the Easy-Screen range.
It is very suitable for classrooms (government contracts).
This screen is the most competitive screen to go with tenders for audio-visual installations.



ACCESSORIES / pp. 59-63



Dimensions are given in mm.

	Overall	Image size	Diagonal	Fabrics		Dimensions (cm)			Net weight
	WxH (cm)	WxH (cm)	(cm)	Matte White P	Datalux S	H1	L1	L2	Kg
1:1	125x125	125x125	176	097010	097113	136	137	129	5
	145x145	145x145	205	097050	097253	156	157	149	7
	158x158	158x158	223	097060	097163	169	172	162	9
	178x178	178x178	251	097080	097283	189	192	182	11
	198x198	198x198	280	097030	097133	209	212	202	13
4:3	158x120	153x115	191	097260	097263	131	172	162	9
	178x135	173x130	216	097289	097273	146	192	182	11
	198x150	193x145	241	097070	097293	161	212	202	13
16:9	178x102	173x97	198	097380	097383	113	192	182	11
	198x114	193x109	221	097320	097323	125	212	202	13

W: Image width H: Image height H1: Total screen height L1: Length of casing L2: Length of bottom bar