

SLIM-SCREEN

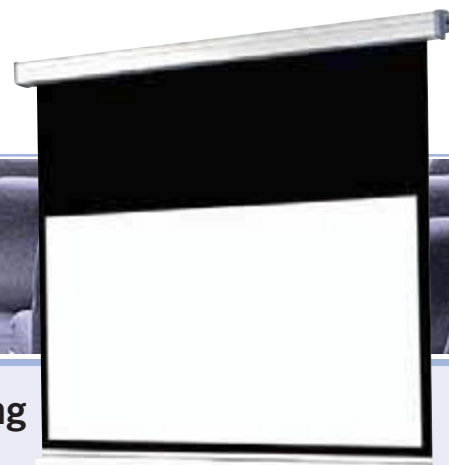
NEW



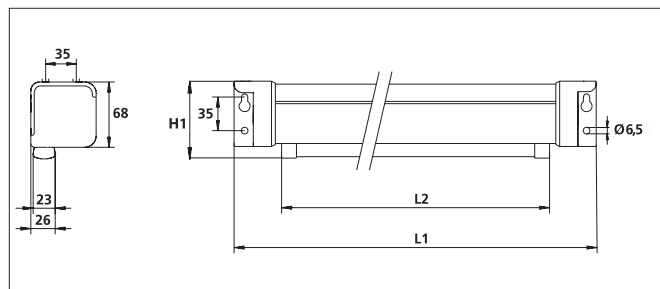
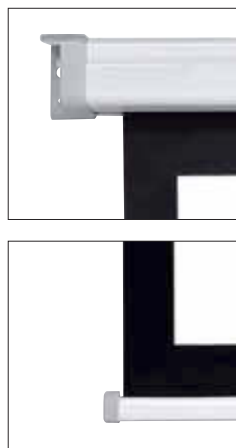
CHARACTERISTICS

- White painted galvanised steel casing (RAL 9016).
- Tubular motor with brake (5- year guarantee) and thermal circuit breaker.
- Easy to install on the wall or ceiling.
- Fixed spacing between the mounting brackets.
- Available with Matte White P fabric.
- The screen has a very wide top band so that the screen can be positioned at ideal projection height.
- 2.5 m connection cable.
- 3- position switch.
- All the electric screens from PROCOLOR comply with EN 60335-1 and EN 60335-2-97.
- 4:3 and 16:9 formats with 2.5 cm black border on 3 sides and wide top border to enhance the colour contrast.

Wall and ceiling mounting HOME CINEMA ECO

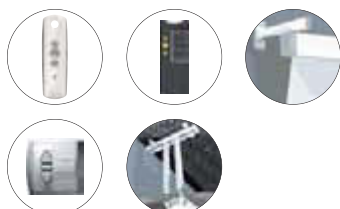


The SLIM SCREEN brings home cinema within everyone's means. This screen combines ease of viewing and simplicity in use. It will satisfy the most exacting in 4:3 or 16:9 format with an extra wide top border for optimum viewing height. Its small casing will fit unobtrusively in the living room.



Dimensions are given in mm.

ACCESSORIES / pp. 59-63



	Overall	Image size	Diagonal	Fabrics	Dimensions (cm)			Power	Speed	Net weight
	WxH (cm)	WxH (cm)	(cm)	Matte White P	H1	L1	L2	W	rpm	Kg
4:3	158x180	153x115	191	094462	191	172	162	130	24	8
	178x180	177x130	216	094482	191	192	182	130	24	9
	198x180	193x145	241	094422	191	212	202	130	24	10
16:9	158x180	153x86	175	094562	191	172	162	130	24	8
	178x180	173x97	198	094582	191	192	182	130	24	9
	198x180	193x109	221	094522	191	212	202	130	24	10

W: Image width H: Image height H1: Total screen height L1: Length of casing L2: Length of bottom bar